



SHA\STEC
International
GENERAL CONTRACTING COMPANY

STRUCTURED INGENUITY

BUSINESS
PROFILE



Strong Foundations
For a Strong Future

ABOUT US

Shaastec international is an ISO Certified Company and was formed to meet the demand for high-quality services in the field of multi-disciplinary engineering services. We strive to provide a world-class engineering service, fully optimizing the structural, civil, mechanical, electrical and facade engineering aspects of all work undertaken.

Our Company is rapidly growing, however our commitment and dedication towards exhibiting high skills in project delivery is constantly renewed to position the company adequately for effective service and project delivery within cost and stipulated time, as well as meeting the client's request to have value for money and / or return of investment.

We believe that our innovative and proactive approach contributes in a broader sense throughout the feasibility, planning, procurement and construction stages to ensure well thought-through, carefully-planned, cost-efficient and effectively-managed projects.

We pride ourselves on the knowledge, skills and expertise of our employees who work together as a team delivering successful projects. Valuing the importance of relationships, we have a collaborative approach that is flexible and can respond quickly to the needs of our clients. Our strong desire for client's satisfaction provides an impetus, a compelling disposition in undertaking project briefs, its execution especially when engaged on turnkey projects.



VISION:

By 2030 we will become the most aspirational construction service and to contribute to the benefit of our clients, employees, and society.



MISSION:

Our mission is to contribute to generating wealth and employment, acting as a benchmark due to its firm commitment to excellence in engineering and innovation, its dedication to serving its clients, the development of its professionals, its ethical principles, good corporate governance, social responsibility, quality, safety of its staff, and care for the environment.



BUSINESS APPROACH:

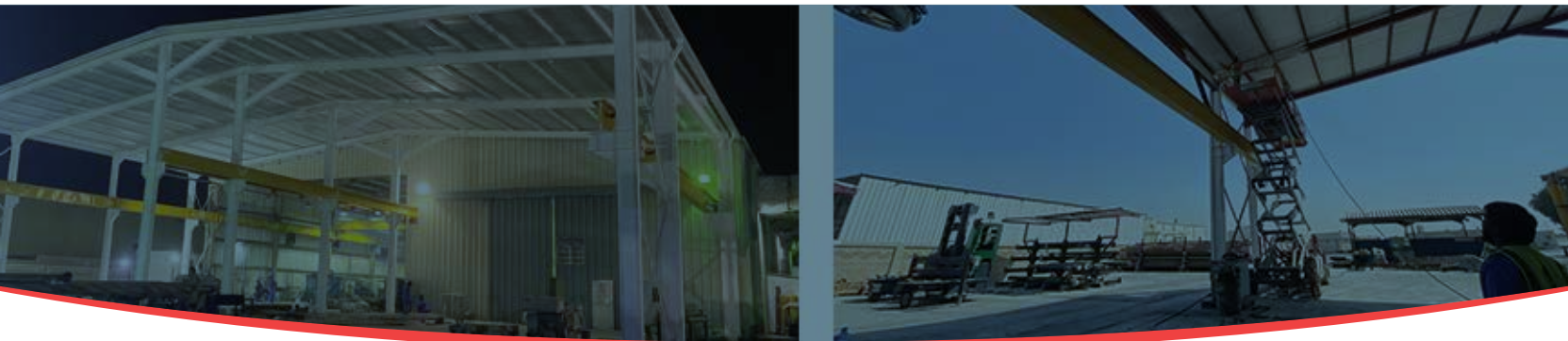
Our experience, innovation and exceptional people differentiate our approach to delivering integrated solutions in a diverse and changing market.

Since its establishment, integral to the company's business strategy have always been its commitment to "Structured Ingenuity". The word "Structured" expresses the company's ability to deliver products and services according to a tested method. "Ingenuity" reflects the important attribute of meeting challenges with effective engineered solution.



CORE VALUES:

Our core values are the foundation by which SHAASTECINTERNATIONAL was built. By applying the principles of hard work, discipline, dedication, and determination, our team possesses all of the necessary expertise to perform our work with excellence on each and every undertaking. We also firmly believe in never settling for lesser quality, and completing every contractual task on time and within budget. Together, we are building a proactive, safe culture and a list of satisfied clients who turn to SHAASTEC INTERNATIONAL for repeat business.



»» INTEGRITY

Our business conduct will include the highest level of honesty, ethics, and moral correctness. We will not compromise employees, customers, or our company.

»» SAFETY

The safety of our employees and the traveling public is everyone's responsibility. Plan safety into every aspect of our work and do not deviate from that plan. Strive for zero incidents.

» RESPECT

Respect is the basic rule of behavior that guides every employee in all of his or her actions: respect for oneself and respect for other employees, customers, third parties, the trade unions, society at large, the Group's principles, laws and regulations, the environment, fairness and ethics in the broadest sense.

» QUALITY

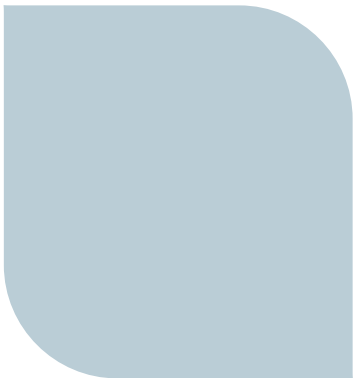
SHAASTEC INTERNATIONAL takes pride in quality workmanship, quality people and quality materials. Utilizing the latest technologies, our employees are able to do their work effectively and efficiently. SHAASTEC INTERNATIONAL maintains our own inventory of high-end equipment, enabling our team to control project speed, meet deadlines and reduce costs.

» ACCOUNTABILITY

Each individual is fully accountable for his or her decisions and maneuvers.

» TRANSPARENCY

Our actions must match our words. Each day we must strive to earn our reputation rather than simply manage it. To that end, we must operate in a manner in which our integrity and values cannot be questioned – that is, we must be authentic



**Building
Your visions.**

**Creating
Reality.**



SERVICES WE PROVIDE



**Design Build /
Design Assist**



**All Civil
Construction**



**Interior and
Fit out works**



**Construction
Management Services**



**Pre-Engineered Metal
Buildings (PEMB)**



**Prefab Site
Office Works**



**Facility Management
Services**



**Industrial flooring,
Protective Coatings,
Concrete Repair and
Special treatments**



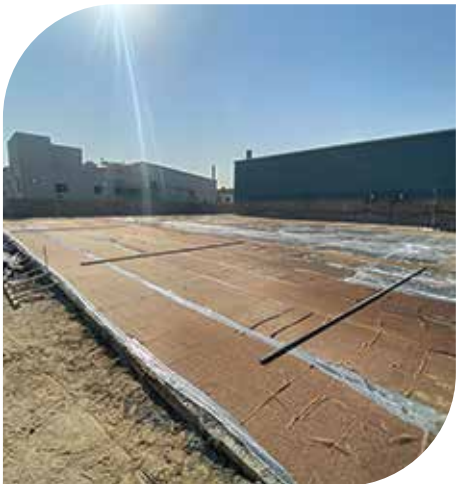
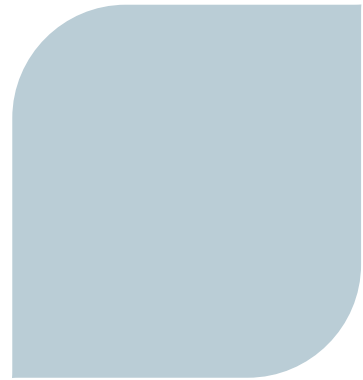
MEP works



**Heavy Structural
Concrete**



**Sheeted and Chain
linked fences**



EARTH WORKS



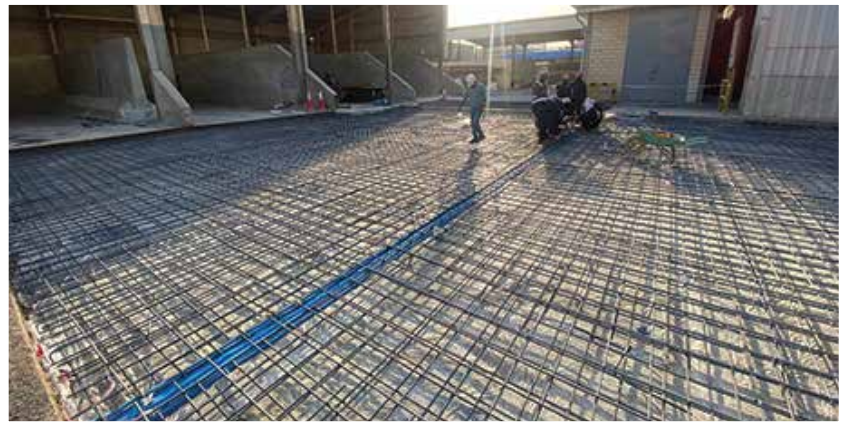


ASPHALT & ROAD WORKS



CONCRETING WORKS







EPOXY AND SPECIAL COATING WORKS



LAND DEVELOPEMNT



INTERIOR FITOUT WORKS



MECHANICAL PROJECTS



PREFAB SITE OFFICES





**WAREHOUSE
PROJECTS**



PAST PERFORMANCE AND CLIENTELE

Yard Development at Nexans Land

Al Rashed Holdings Co. KSCC, Mina Abdullah

Construction of Warehouse in Wafra Base Yard for Burghan Drilling

Burghan Drilling / MESCO, West Kuwait

Temporary Site Office Facilities for PAHW

National Cleaning Company (NCC), Mina Shuaiba

Coiled Tubing West Kuwait Facility

GOFSCO, Mina Shuaiba

Construction Rig Support Facility Warehouse, Yard Development, Other Civil and MEP Works

Smith International Gulf Services – Kuwait

Yard Development, Prefab Site Office Facilities

Al Rashed Holding Co. KSCC

Land Development and Interlock Paving, Construction of Warehouse and Site Facilities

Jassim transport and Stevedoring Co. KSCC, Mina Abdullah

Yard Facility Management Services

Petroleum Dynamics Oil and Gas, KOC Warehouse and Storage area, Mina Ahmadi

Yard Facility Management Services

Al Mansoori Petroleum Services, KOC Laydown Area, Kabd

Pre Engineered Metal Building

Five Star Co. WLL, Al Julaih

Construction of Workshop and Warehouse Facility

Agrim Project Services, Al Julaih

Fabrication and Erection of Storage Facility for RMC Plant.

Hyundai E&C, Subiya

Construction of Site Office facilities for Mutla Housing Project.

CGGC / Al-Shaheen Technical Contracting Company, Al Mutla

Precast Equipment Foundations for Arifjan Camp

Lucent Gen. Trading & Contracting Co. W.L.L, Al-Julaih

Construction of Sheeted Fence and Barbed Wire Concertina.

Jassim Transport and Stevedoring Company, Mina Al-Abdullah

Construction of Piping Shop Installation Warehouse facilities for KLNG PJ

Hyundai Engineering and Construction / JICON, Mina Al Zour LNG Import Project

PAST PERFORMANCE AND CLIENTELE

Asphalt Concreting Work

AbdulmohsenAbdulaziz Al Batain Co., Shuwaikh

Specialized Flooring work on Ramp

AbdulmohsenAbdulaziz Al Batain Co., Shuwaikh

Fabrication of Overhead water tank.

GDMC, Mina Al-Ahmadi

Temperature Control Storage Facility

IWC / AKZONOBEL, Subhan

Specialized Flooring

IWC / AKZONOBEL, Subhan

Interior Decoration and 3D Modelling

Jabriya Indian School, Jabriya

Interior Decoration and 3D Modelling

Salsa Buddies Restaurant, Al-Ardhiya

Drip Trays

Byrne Equipment Rental, Mina Al-Abdullah

Corporate Office refurbishment and modification.

Jassim Transport and Stevedoring Company, Mina Al-Ahmadi

Manpower Supply for MEW Power Plant Project.

SEPCO III / Compass Ocean Logistics International., Mina Al Zour

Manpower Supply for Warehouse Operations.

National Oil Well Varco / Tanajib International, Mina Al-Ahmadi & Mina Al-Abdullah

Design and Construction of Oak and Smoke Restaurant

Oak and Smoke Restaurant, CDC Mall, Shuwaikh

Design and Construction of Protech Monte Carlo

Reflect Automotive, Shuwaikh

Office Work Stations and Custom made furnitures

PERI Kuwait, Al Julaih

Cooling Tower Installation

TVP Solar, Sulaibhiya

Design and Supply and installation of Temporary office facilities for Construction of the Logistics and Transfer Warehousesat Subhan

Al Hamra Kuwait Company WLL





SHAASTEC
International
GENERAL CONTRACTING COMPANY
STRUCTURED INGENUITY



Scan for more details



CONTACT US

SHAASTEC International General Contracting Co.
Building No 25, 10th Floor, Office No:2
Al Muthanna Street, Hawally – Kuwait



+965 600 374 49
+965 666 469 22
+965 226 456 04



info@shaastec.com



www.shaastec.com



9001:2015



14001:2015



45001:2018